

Faculty of Science and Technology

HDR Information Session

Charles Darwin University acknowledges all First Nations people across the lands on which we live and work, and we pay our respects to Elders both past and present.

Agenda

1. Welcome by the Pro Vice-Chancellor FST (Suresh)
 2. Introduction to the Faculty Research Committee Members(Vinuthaa)
 3. Information on HDR Allocation and grants (Dani)
 4. Resources available to FST HDRs through Institutes/Centres
 - RIEL (Sam) , NACAS (Mariana)
 - ERI and AMA (David) ACCI (Sami)
 5. Additional Resources (Vinuthaa)
 6. HDR Buddy System -Open Discussion (Vinuthaa / Allyson)
 7. Research Integrity (Erica)
 8. Research Data Management (Vinuthaa)
 9. Milestones (Steven)
 10. Questions
- Lunch and networking

Office of Research and Innovation

[Current HDR candidates | Charles Darwin University \(cdu.edu.au\)](https://www.cdu.edu.au)

Information for HDR Students



Induction and Enrolment

Read all information relevant to your first days of research journey with Charles Darwin University!

[Read more](#)



Milestones

Find out more about all of information in relations to HDR Milestones

[Read more](#)



During your candidature

Navigating your Higher degree by Research programme

[Read more](#)

Faculty of Science and Technology

<https://www.cdu.edu.au/science-technology/research/current-hdr-students>

Faculty Research Committee Members

Committee Chair FST Associate Dean of Research	Vinuthaa Murthy
Committee secretary HDR Coordinator	Dani Choveaux
DISCIPLINE	FST Research Committee representative
Engineering	Milad Bazli
IT	Sami Azam
Environment	Erica Garcia
RESEARCH INSTITUTE / CENTRES	
Research Institute for Environment and Livelihoods	Brett Murphy
Energy & Resource Institute	David Ompong
North Australia Centre for Autonomous Systems	Mariana Campbell
NT Academic Centre for Cybersecurity & Innovation	Sami Azam
OTHER	
ECR representative	Hooman Mehdizadeh
HDR student representative	Allyson Malpartida
Research Integrity Advisor	Erica Garcia
Human Ethics Advisors- Environment Engineering &IT	Sam Banks and Vinuthaa Murthy

Student Allocations

Funds available for research expenses.

Masters: up to 2 years full-time or 4 years part-time

PhD: up to 3 years full-time or 6 years part-time

High cost (full-time student) \$1800 per semester

High cost (part-time student) \$900 per semester

Low cost (full-time student) \$800 per semester

Low cost (part-time student) \$400 per semester

Grants

Additional Financial Assistance to HDR Candidates.

HDR Grants are available upon funding. Eligibility criteria must be met to be considered for the grants.

[HDR International Conference Travel Grant](#)

[HDR Domestic Conference Travel Grant](#)

[HDR Supplementary Funding Grant](#)

[External HDR Travel Grant](#)

[Current FST HDR students website](#)

Resources available to FST HDRs through Institutes/Centres

Research Institute for the Environment and Livelihoods (RIEL)

NACAS, BNA, RINA ..

Energy and Resources Institute (ERI)

AMA, ACCI..



RIEL

Research Institute for
the Environment and
Livelihoods

<https://www.cdu.edu.au/riel>

<https://www.cdu.edu.au/riel/consultancy-services>

Existing service centres

[Darwin Centre for Bushfire Research \(DCBR\)](#)

[Bioscience North Australia](#)

[Aboriginal Research Practitioners Network](#)

Other services

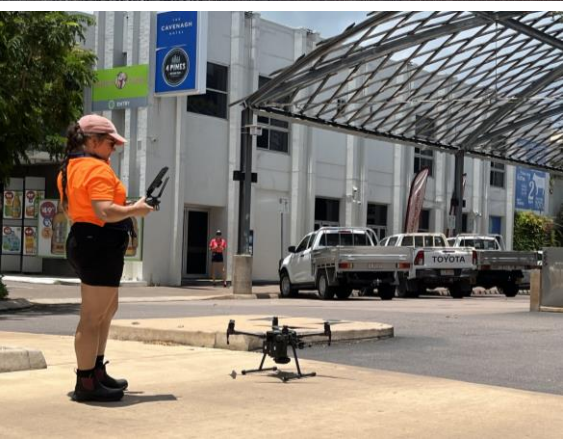
[Aquatic and terrestrial ecology](#)

[Industry and environment](#)

[Participatory management and enterprise development](#)

[Technologies and methods](#)

[Water quality and quantity](#)



NACAS

North Australia Centre
for Autonomous Systems

Capabilities

- Long-range drone operations for remote sensing, surveillance, and environmental sampling.
- Advanced composite 3D printing of anything.

Facilities

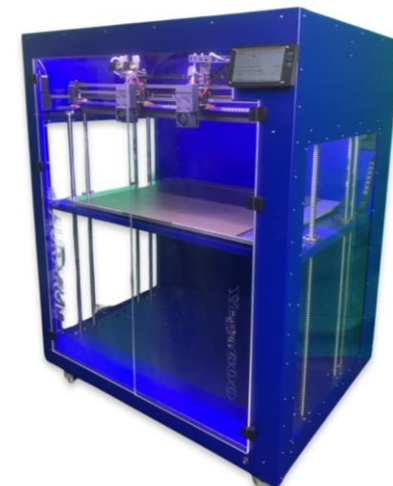
- Drone Lab: Purple 16
- 3D Printers: Yellow 2.1.07



nacas.net



RPAS@cdu.edu.au





	Item	Brand	Function
1	FTIR- Fourier-transform infrared spectroscopy	Bruker INVENIO	Analysis of solids, liquids and gases using Infrared Spectroscopy Equipped with comprehensive range of accessories; e.g., DRIFT
2	STA (TGA/DSC)- Simultaneous thermal analyser	Netzsch F3 Jupiter	Thermogravimetric analysis: measurement of mass changes and thermal effects between -150°C and 1600°C. Equipped with the specialised water-vapour furnace
3	Elemental analyser	Thermo Fisher FlashSmart	Elemental composition of samples: carbon, hydrogen, nitrogen, sulfur and oxygen (CHNS/O)
4	DCAT – Dynamic Contact Angle measuring devices and Tensiometer	Dataphysics	Universal measuring devices for the force-based measurement of interfacial parameters and phenomena.
5	Turbidity meter	INESA WZS-188	Measurement of attenuation of light by insoluble particulate matter suspended in transparent liquid.
6	PAT-Profile Analysis Tensiometer	Sinterface PAT1M	Analysis of the shape of pendent and sessile drops or buoyant and captive bubbles.
7	ISE pH meter	Hanna Instrument	pH measurement
8	Ross Miles apparatus		Foam analysis
9	Modular Compact Rheometer	MCR302e	with a torque range from 0.5 nNm to 230 mNm and integrated active thermal management

10	GC-FID x 2	PerkinElmer Clarus 580/680	One system with FID and TCD for refinery gas analysis such as H ₂ , N ₂ , O ₂ , methane, ethane, and olefins. Another system with FID and FPD for volatile compounds analysis such as fatty acids, essential oils and pheromones.
11	GC-MS	Agilent 8890-5977	With two channels: 1-FID, 2-MS. for volatile compounds analysis such as fatty acids, essential oils and pheromones.
12	Horizontal furnace	Labec HTF50/12-3	
13	SEM-scanning electron microscope	Thermo Scientific™ Phenom™ XL G2	Focused beam of electrons to scan the surface of a specimen and generate images at a much greater resolution compared to optical microscopy
14	X-ray diffractometer or XRD machine	Malvern Panalytical Empyrean	Analyzing and measuring the structure of materials.
15	ICP-OES (Inductively coupled plasma - optical emission spectrometry)	Shimadzu ICPE-9000	Industry-standard technique for the elemental analysis of a range of metals and alloys.
16	LightSPEE3D printer	SPEE3D	Metal 3D printing



Cyber security
Governance and Risk
Management

Human-Centred
Security and AI

Organizations and
cybercrime

Health Informatics

Critical Infrastructure
Security

AI for Environmental
and Social Good

Multi-disciplinary research centre that delivers a real-world impact in Information and Computing Sciences in particular: Cyber Security, Data Science and Artificial Intelligence.

- ACCI work closely with the Australian government, industry partners, NGO and universities, and has a strong international network and partners to stay at the forefront of innovation and address society's most pressing challenges.
- CDU IT CodeFair: advocates student's talents showcasing their work more broadly to the University and industry communities. <https://itcodefair.cdu.edu.au/>

Cyber Territory Skills Hub

Virtual centre bringing together the University, the Northern Territory and Federal Governments and industry partners in the training of people to improve cyber awareness and management, and contribute to industry capability.



Other resources

Statistics Support : Mirjam Kaestli

FST-support : fst-support@cdu.edu.au

CDU Wellbeing Support Line [1300 933 393](tel:1300933393) and SMS [0488 884 144](tel:0488884144)

CDU offers short-term individual counselling sessions and regular group wellbeing sessions

[Counselling | Charles Darwin University \(cdu.edu.au\)](https://www.cdu.edu.au/counselling)

CDU Security

Free call: [1800 646 501](tel:1800646501) (Australia-wide 24/7)

T: [+61 8 8946 7777](tel:+61889467777) (Casuarina 24/7)

E: security@cdu.edu.au

RESPECT. NOW. ALWAYS

Consent Matters: a free online course

How to access the course

- CDU students can find the free online course in their [Learnline units](#).
- CDU staff can find the free online course in [eCentre](#) under 'staff induction items'.
- Click on the course to begin.

Link : <https://www.cdu.edu.au/about-cdu/values-and-culture/respect-now-always/consent-matters-free-online-course>

FST - HDR Buddies

CDU GLOBAL – International students

RIEL & Co Postgraduate Society - CDU



- Friday fancy once a fortnight
- Welcome bbq and Christmas party once a year
- Email rielcps@groups.cdu.edu.au to join the mailing list and become a member

Research Ethics and Integrity

<https://www.cdu.edu.au/research-and-innovation/research-ethics-and-integrity>

Charles Darwin University places great value on the knowledge, expertise and integrity of its research students and staff and on their commitment to conduct research with high standards of integrity and ethics.

The University works to build a responsible research culture underpinned by the Australian Code for the Responsible Conduct of Research and based on respect for human research participants, animals and the environment.



Human research ethics

The Charles Darwin University Human Research Ethics Committee (CDU-HREC) oversees all human research



Animal ethics

CDU has a strong commitment to research excellence and integrity. Through our world-class teaching and

Research Integrity



<https://www.cdu.edu.au/research-and-innovation/research-ethics-and-integrity/research-integrity>

What does the RIA do?

1. Promotes the responsible conduct of research.
2. Develops and promotes of a culture of research ethics and integrity.
3. Provides advice to researchers regarding any aspect of research integrity and the Australian Code for the Responsible Conduct of Research.
4. Discusses concerns and complaints in relation to potential breaches of the Code.
5. Recognize that situations may be complex, and particular cases may be referred to other CDU policies, such as staff or student misconduct, or bullying.

A screenshot of the 'Research Integrity' page on the Charles Darwin University website. The page has a light blue header with a breadcrumb trail: 'Home > Research and Innovation > Research Ethics and Integrity > Research integrity'. Below the header, the page title 'RESEARCH AND INNOVATION Research integrity' is displayed, followed by the subtitle 'Support and services'. A navigation menu on the left lists various categories under 'RESEARCH AND INNOVATION', with 'Research Ethics and Integrity' expanded to show sub-items like 'Defence trade controls', 'Human research ethics', and 'Human ethics policies and legislation'. The main content area on the right contains text explaining CDU's commitment to research integrity, its adherence to the Australian Code for the Responsible Conduct of Research (2018), and the role of Research Integrity Advisors (RIA) in handling concerns and complaints. It also mentions that CDU strongly encourages reporting and provides resources for staff and students.

Research Data Management

"RESEARCH DATA MANAGEMENT PROCEDURE"

Governance Document Library

- Link- [Research Data Management Procedure / Governance Document Library \(cdu.edu.au\)](#).

The library website has a storage guide with information regarding the policies and strategies for storing your research data.

- Link - [Data Storage - Research Data Management \(RDM\) - Subject guides at Charles Darwin University \(cdu.edu.au\)](#)

Library had launched 'Researcher' Page, outlining all services and guides that are provided by the library to researchers, including HDRs: <https://www.cdu.edu.au/library/researcher>.

The page features [Research Data Management guide](#), which contains links to the [RDM and Primary Materials Checklist](#) and the [Data Management Plan online tool](#).





Induction and Enrolment

Read all information relevant to your first days of research journey with Charles Darwin University!

[Read more](#)



Milestones

Find out more about all of information in relations to HDR Milestones

[Read more](#)



During your candidature

Navigating your Higher degree by Research programme

[Read more](#)

[Current HDR candidates | Charles Darwin University \(cdu.edu.au\)](#)

HDR Milestones and updates

Dean of Graduate Studies: Prof Steven Greenland

