

Windows 10: Firefox & Java Web Start launcher

Callista Log in instructions



Accessing Firefox web browser if it currently is not installed on your computer.

Accessing Software Center

Download from Software center



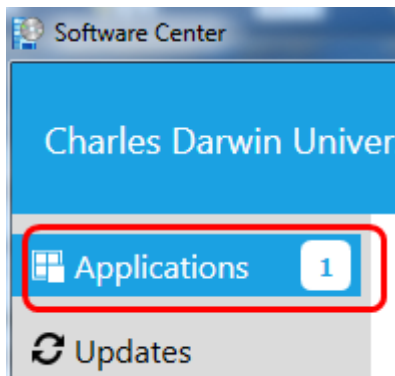
Step 1: Click the Start Menu

Step 2: Type 'Software Center' in the Search field

Step 3: Click 'Software Center'



Downloading Firefox browser

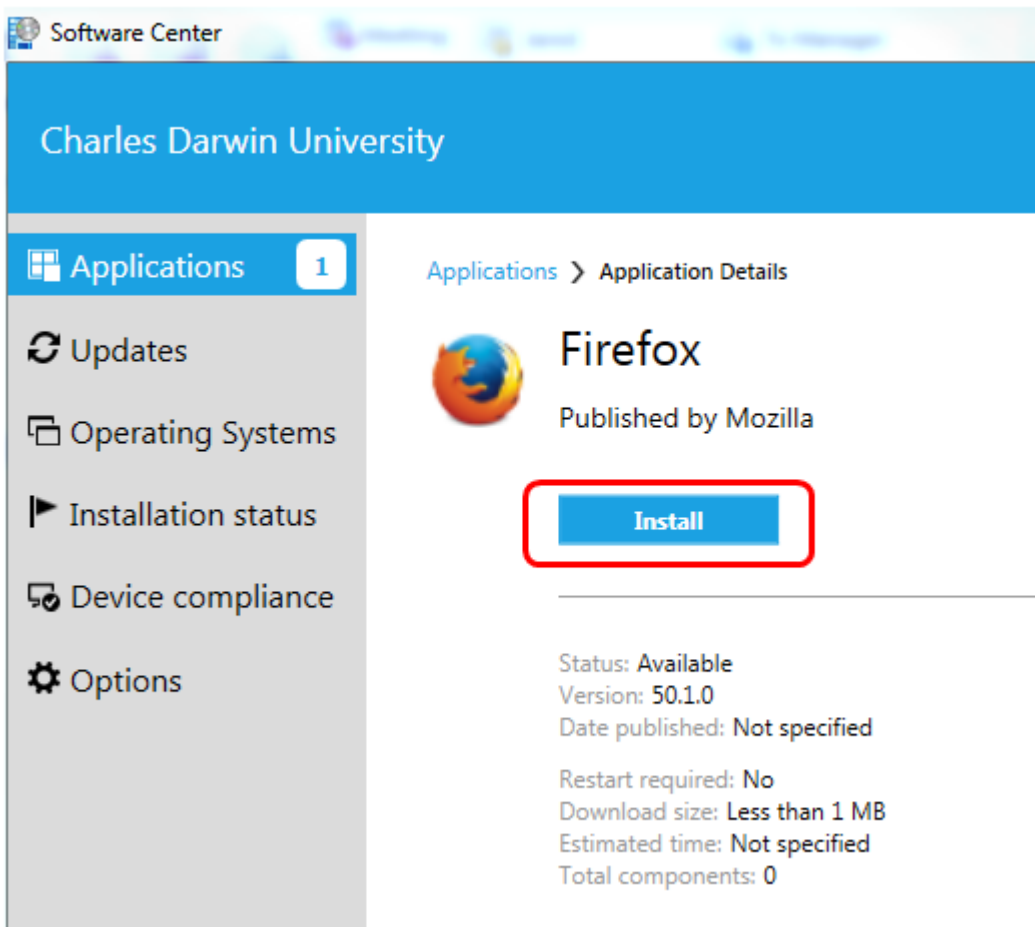


Step 1: Click 'Application' tab



Firefox
Mozilla
50.1.0

Step 2: Click 'Firefox' icon



Step3: Click 'Install'

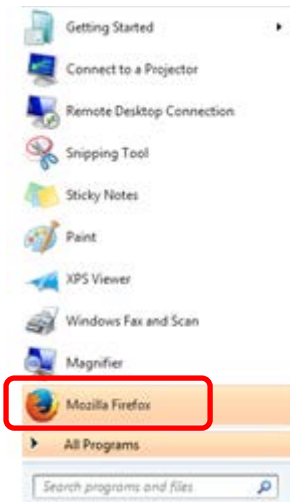
To check if Firefox is installed there are two options.



Option 1: the above screen will now show

If the application does not successfully install, contact ITMS on ext. 6600.

Option 2:



Step 4: Check Firefox appears on Start Menu

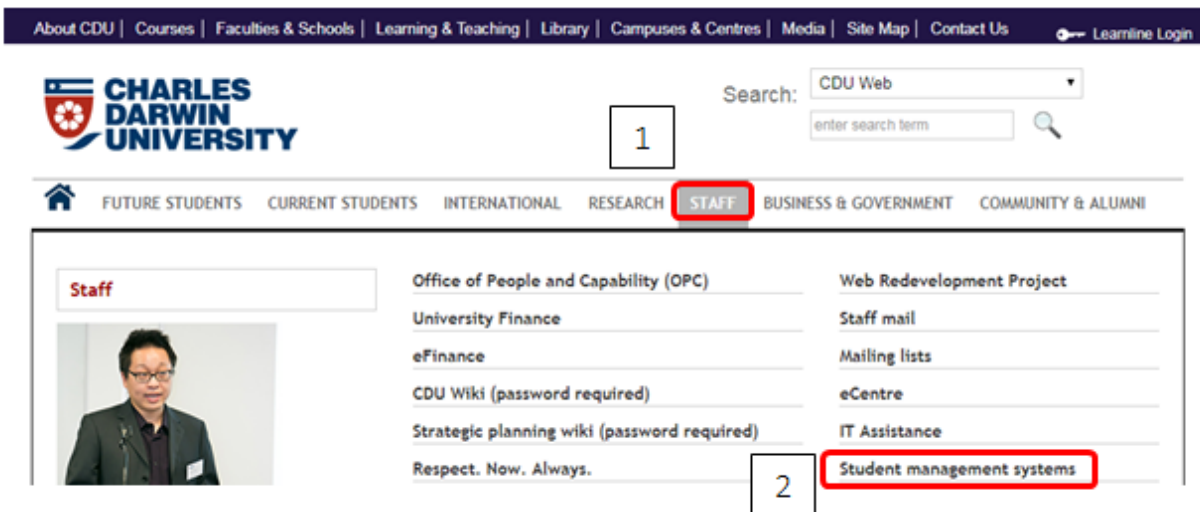
Opening the Java Web Start Launcher for the first time

Step 1: Log onto Cisco AnyConnect.  Cisco AnyConnect Secure Mobility Client

ITMS instructions can be found on this link <http://www.cdu.edu.au/itms/webvpn>

Step 2: Open Firefox browser

Step 3: In the browser field type www.cdu.edu.au

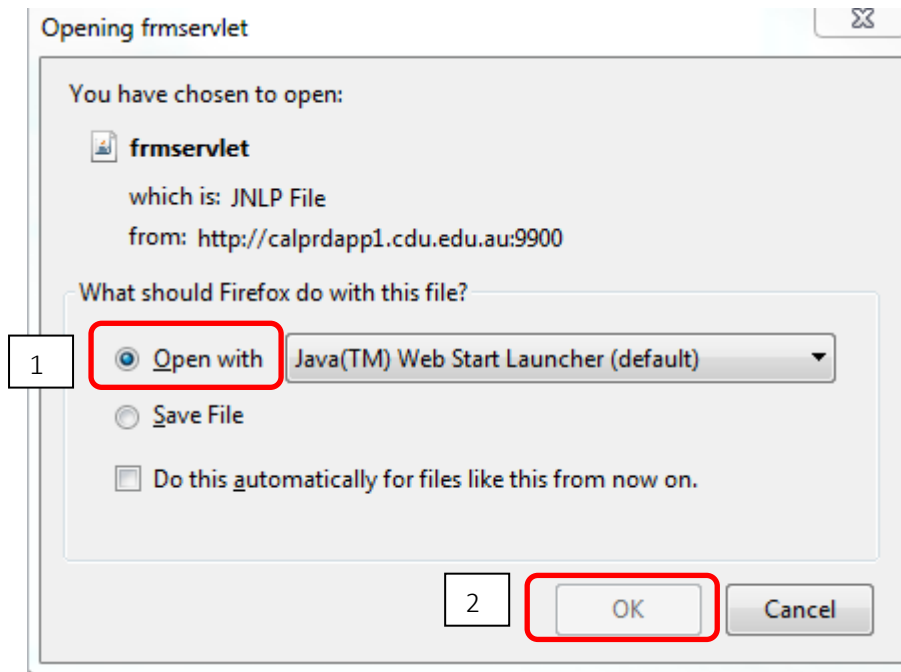


Step 4: Hover over 'Staff' tab

Step 5: Click 'Student Management Systems'

Callista login

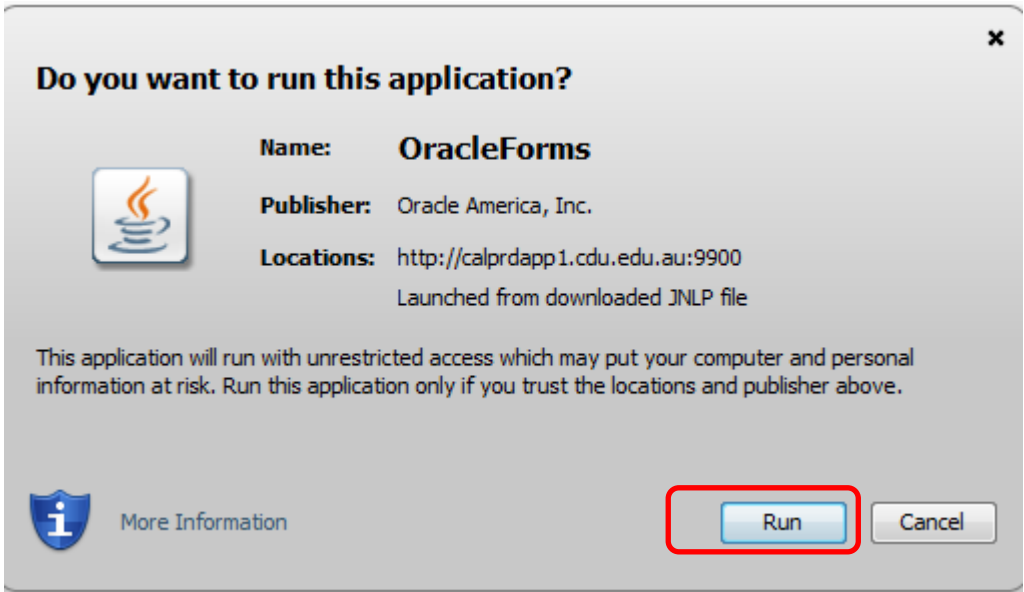
Step 6: Click 'Callista login'



Opening frmservlet

Step 7: Click 'Open with'

Step 8: Click 'Ok'

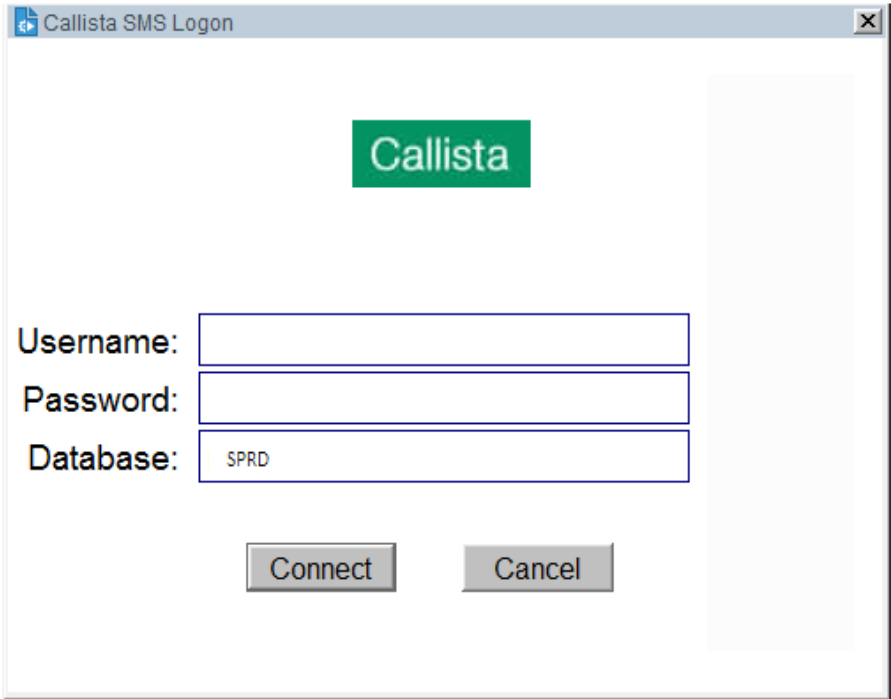


Step 9: Click 'Run'

Log on screen appears

Step 10: Enter your Callista Username and password

Step 11: Click 'Connect'



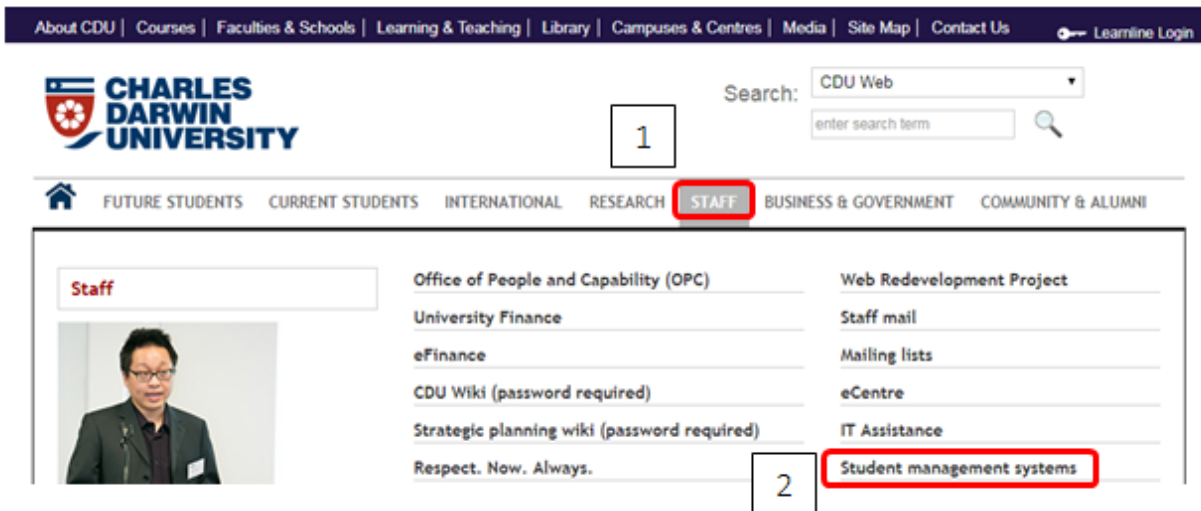
Opening the Java Web Start Launcher subsequent times

Step 1: Log onto Cisco AnyConnect.  Cisco AnyConnect Secure Mobility Client

ITMS instructions can be found on this link <http://www.cdu.edu.au/itms/vpn>

Step 2: Open Firefox browser

Step 3: In the browser field type www.cdu.edu.au



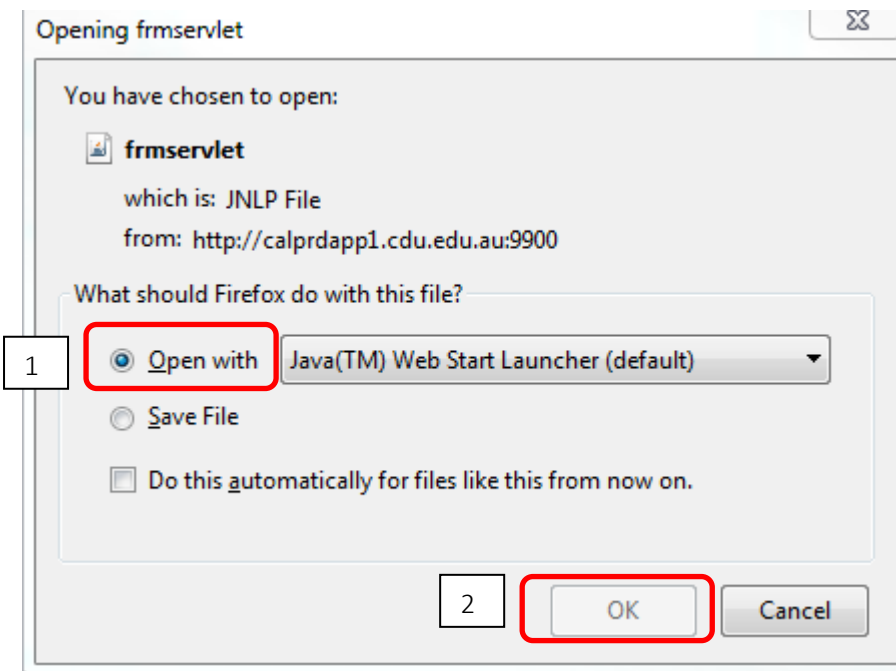
The screenshot shows the Charles Darwin University website. At the top, there is a navigation bar with links: About CDU, Courses, Faculties & Schools, Learning & Teaching, Library, Campuses & Centres, Media, Site Map, Contact Us, and Learnline Login. Below this is the university logo and a search bar containing 'CDU Web'. A box labeled '1' highlights the search bar. Below the search bar is a horizontal menu with tabs: FUTURE STUDENTS, CURRENT STUDENTS, INTERNATIONAL, RESEARCH, STAFF, BUSINESS & GOVERNMENT, and COMMUNITY & ALUMNI. The 'STAFF' tab is highlighted with a red box. Below the menu is a grid of links. On the left, there is a 'Staff' section with a photo of a woman. To the right, there are several links: Office of People and Capability (OPC), University Finance, eFinance, CDU Wiki (password required), Strategic planning wiki (password required), Respect. Now. Always., Web Redevelopment Project, Staff mail, Mailing lists, eCentre, IT Assistance, and Student management systems. A box labeled '2' highlights the 'Student management systems' link.

Step 4: Hover over 'Staff' tab

Step 5: Click 'Student Management Systems'

Callista login

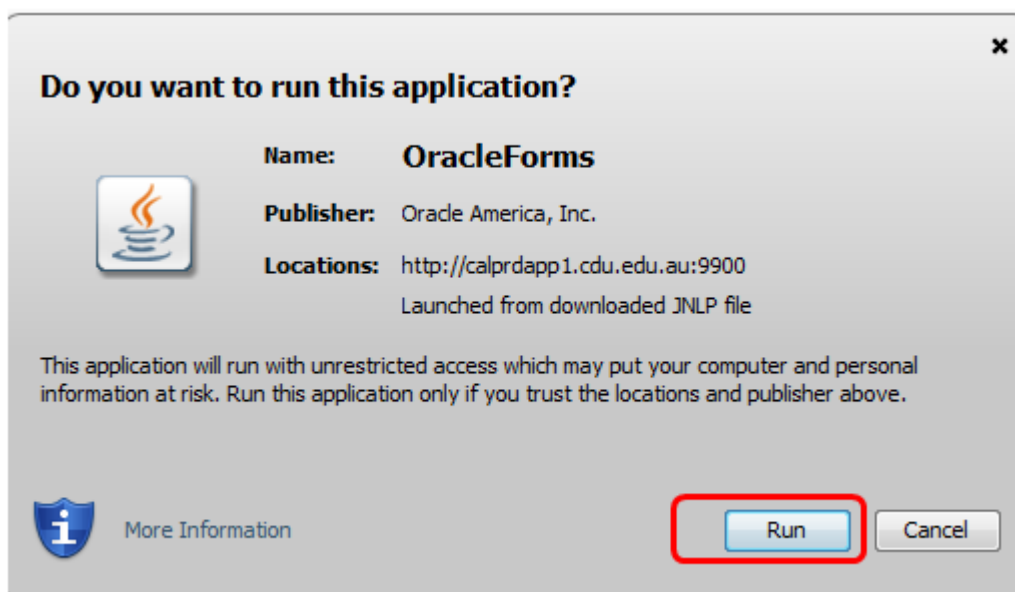
Step 6: Click 'Callista login'



Opening frmservlet

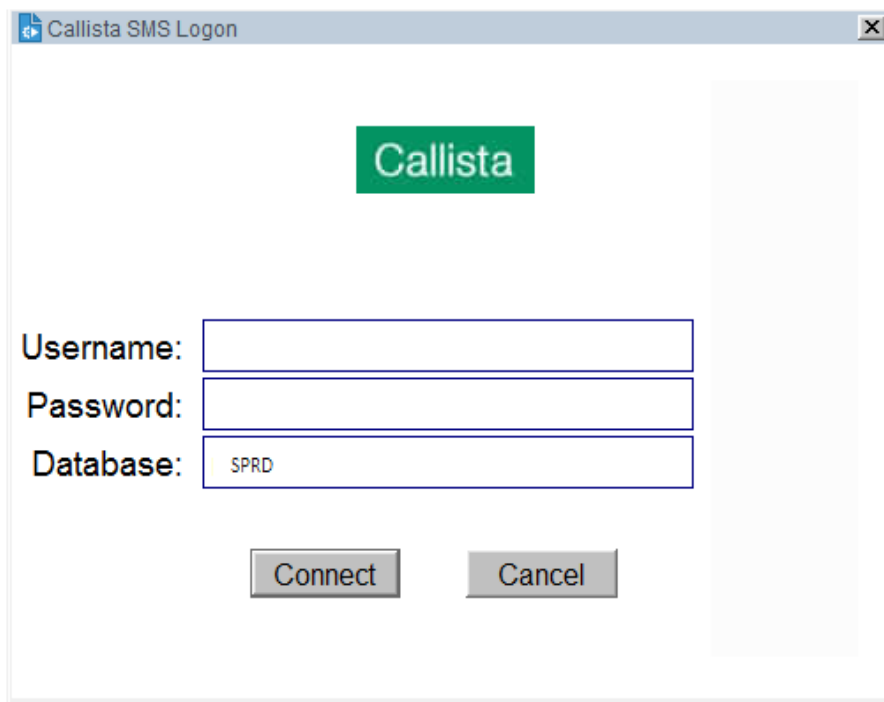
Step 7: Click 'Open with'

Step 8: Click 'Ok'



Step 9: Click 'Run'

Log on screen appears



Step 10: Enter your Callista Username and password

Step 11: Click 'Connect'

Java icon appears on task bar 